

# What's Up

Bass

Holger Mantei

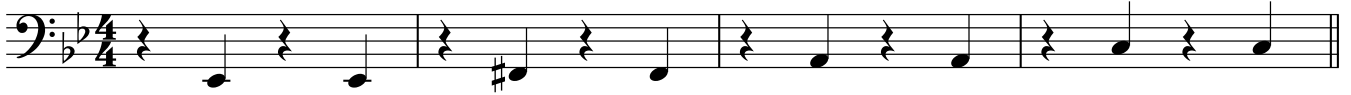


E $\flat$  $\Delta$ 7#5

F# $\Delta$ 7#5

A $\Delta$ 7#5

C $\Delta$ 7#5



5

Gm7

Am7 $\flat$ 5

D7 $\flat$ 9

Gm7

G7



9

Cm7

F7

B $\flat$  $\Delta$ 7

D7#9



13

Gm7

Am7 $\flat$ 5

D7 $\flat$ 9

Gm7

D7#9



17

Gm7

Am7 $\flat$ 5

D7 $\flat$ 9

Gm7

G7



21

Cm7

F7

B $\flat$  $\Delta$ 7

D7#9



25

Gm7

Am7 $\flat$ 5

D7 $\flat$ 9

E $\flat$  $\Delta$ 7#5

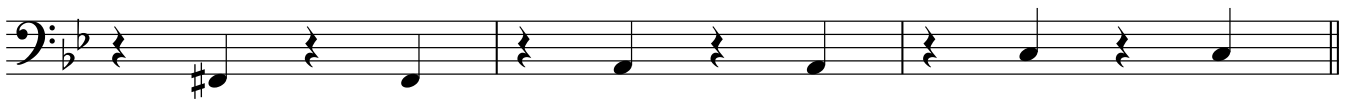


28

F# $\Delta$ 7#5

A $\Delta$ 7#5

C $\Delta$ 7#5



Solo über Gm-Blues

CODA

31

Gm $\Delta$ 7

