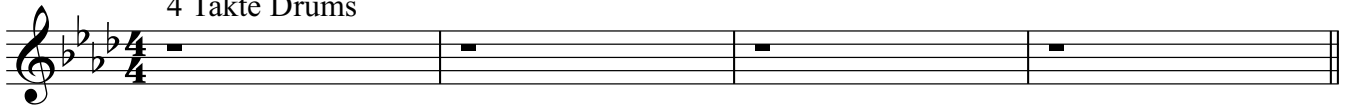


Brasil

Holger Mantei

$\text{♩} = 118$

4 Takte Drums



A Fm^7 Bbm^7 $C7b9b13$ Fm^7 $C7alt$

A musical staff in 4/4 time with a key signature of three flats. It contains measures 5 through 8. Measure 5 has a Fm^7 chord. Measure 6 has a Bbm^7 chord. Measure 7 has a $C7b9b13$ chord with two triplet eighth notes. Measure 8 has a Fm^7 chord and a $C7alt$ chord.

Fm^7 Bbm^7 $C7b9b13$ Fm^7 $F7alt$

A musical staff in 4/4 time with a key signature of three flats. It contains measures 9 through 12. Measure 9 has a Fm^7 chord. Measure 10 has a Bbm^7 chord. Measure 11 has a $C7b9b13$ chord with two triplet eighth notes. Measure 12 has a Fm^7 chord and an $F7alt$ chord.

B Bbm^7 Eb^7 $Ab^{\Delta 7}$ $D^{\flat\Delta 7}$ Gm^7b5 $C7b9$ Fm^7

A musical staff in 4/4 time with a key signature of three flats. It contains measures 13 through 16. Measure 13 has a Bbm^7 chord. Measure 14 has an Eb^7 chord. Measure 15 has $Ab^{\Delta 7}$ and $D^{\flat\Delta 7}$ chords. Measure 16 has a Gm^7b5 chord and a $C7b9$ chord.

Bbm^7 Eb^7 $Ab^{\Delta 7}$ $D^{\flat\Delta 7}$ Gm^7b5 $C7b9$ Fm^7 $C7alt$

A musical staff in 4/4 time with a key signature of three flats. It contains measures 17 through 20. Measure 17 has a Bbm^7 chord. Measure 18 has an Eb^7 chord. Measure 19 has $Ab^{\Delta 7}$ and $D^{\flat\Delta 7}$ chords. Measure 20 has a Gm^7b5 chord, a $C7b9$ chord with a triplet eighth note, a Fm^7 chord, and a $C7alt$ chord.

A Fm^7 Bbm^7 $C7b9b13$ Fm^7 $C7alt$

A musical staff in 4/4 time with a key signature of three flats. It contains measures 21 through 24. Measure 21 has a Fm^7 chord. Measure 22 has a Bbm^7 chord. Measure 23 has a $C7b9b13$ chord with two triplet eighth notes. Measure 24 has a Fm^7 chord and a $C7alt$ chord.

Fm^7 Bbm^7 $C7b9b13$

A musical staff in 4/4 time with a key signature of three flats. It contains measures 25 through 28. Measure 25 has a Fm^7 chord. Measure 26 has a Bbm^7 chord. Measure 27 has a $C7b9b13$ chord with two triplet eighth notes. Measure 28 has a Fm^7 chord and a $C7alt$ chord.

28 **C** Fm7 Bbm7 C7alt Fm7

32 Fm7 Bbm7 C7alt Fm7 C7alt

36 Fm7 Bbm7 C7alt Fm7

40 Fm7 C7alt Fm7 C7alt

Solo über A-B-A

CODA

44 Fm7